



**A New Sustainable  
and Connected  
Mixed-Use Urban  
Center in Vineyard**



1997



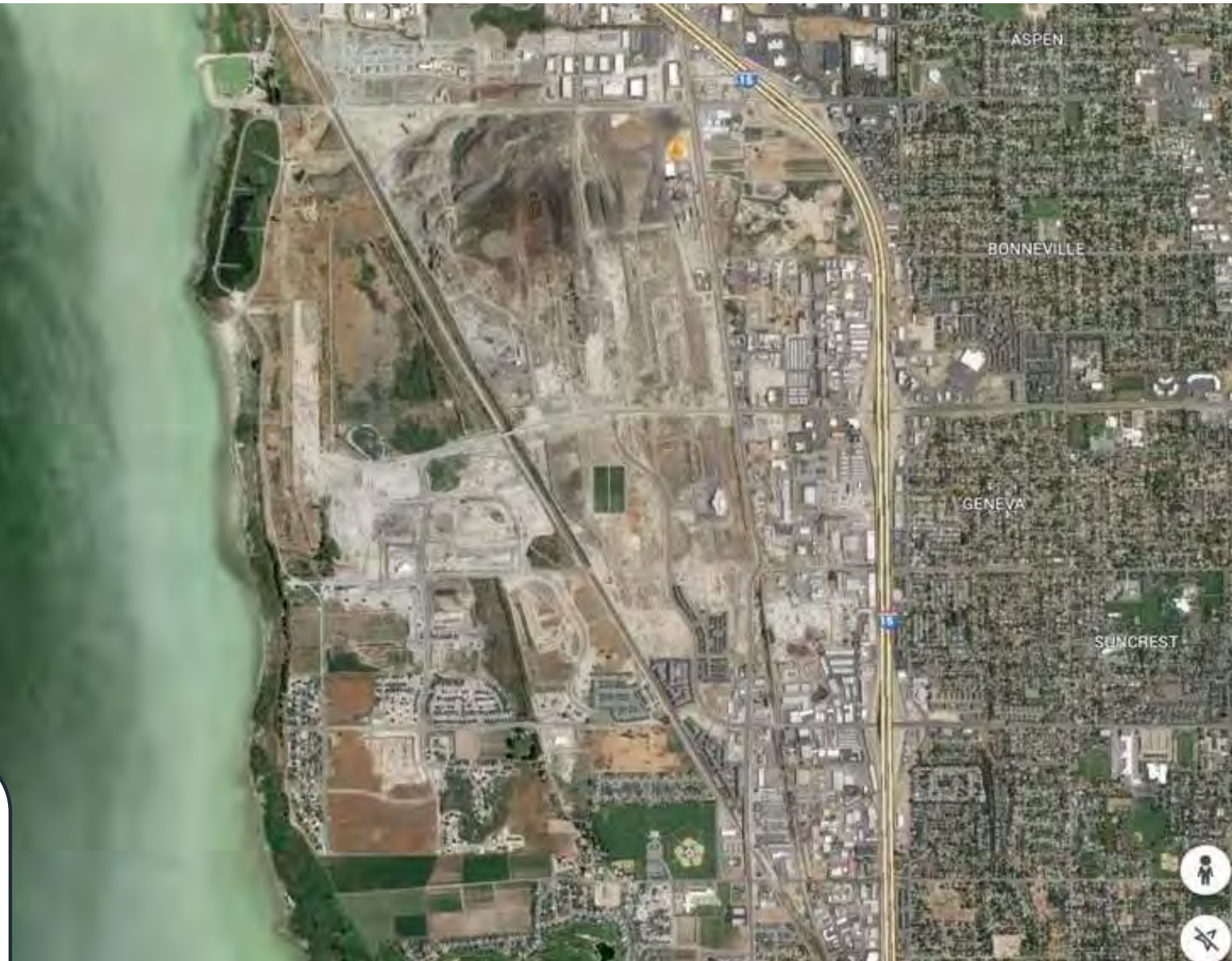


**2009**





2016



2017





2024

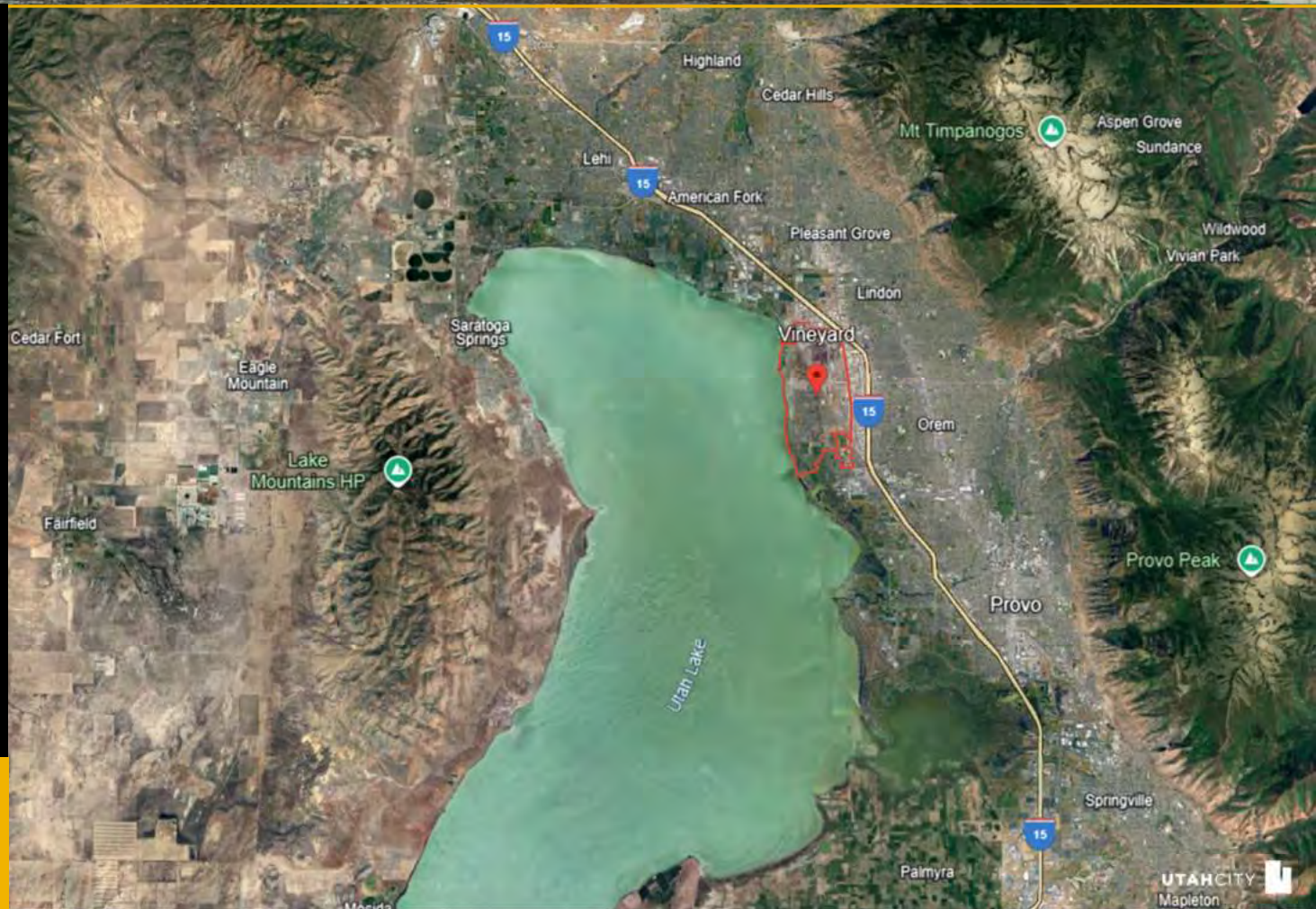




# Utah County

“Utah County is going to be the epicenter of growth,” EDC Utah

Utah County is in **Need** of an Urban Core.



# Masterplan

Developed with Jeff Speck and DPZ, the first 350 acres of Utah City were thoughtfully designed to feature a variety of distinct spaces, including two linear promenades, a downtown core, lakefront living with a re-established beach and lake-oriented boardwalk, a retail street and several “shared spaces” for both residents and visitors.







COMMUNITY BUILDERS

# Utah City Welcomes

## Huntsman Cancer Institute

Huntsman Cancer Institute expands lifesaving impact across Utah with plans for new comprehensive cancer center. HCI will bring thousands of high-paying jobs to Utah City along with 150+ hospital beds and new research capabilities.



“

...The facility is **committed to providing a “cancer-free frontier”** and this second facility is a step in that process. No more driving, cancer patients in Utah County have collectively made over 35,000 trips each year to the Salt Lake facility at the University of Utah.

— Mary Beckerle, CEO Huntsman Cancer Institute



COMMUNITY BUILDERS

# Innovative Offerings



## Bella's Market

**Bella's**  
MARKET

Bella's is a bespoke market concept that will evolve with the growing needs of Utah City. Designed to be a unique and inspired shopping experience. Featuring large windows, greenery throughout and a roof top botanical garden designed for gathering.



## Vibrant Community

With multiple parks and open spaces, Utah City will be the premier destination for events. A full calendar of programming featuring arts and cultural festivals, concerts, culinary events, outdoor fitness and more. Utah City is packed full of shared experiences that can only be had here.







50+ ACRES OF GREEN SPACES

# Parks & Paseos



Waterfront at Utah  
City



12 Acre  
Promenade



A Civic Plaza primed  
for events





50+ ACRES OF GREEN SPACES

# Parks & Paseos



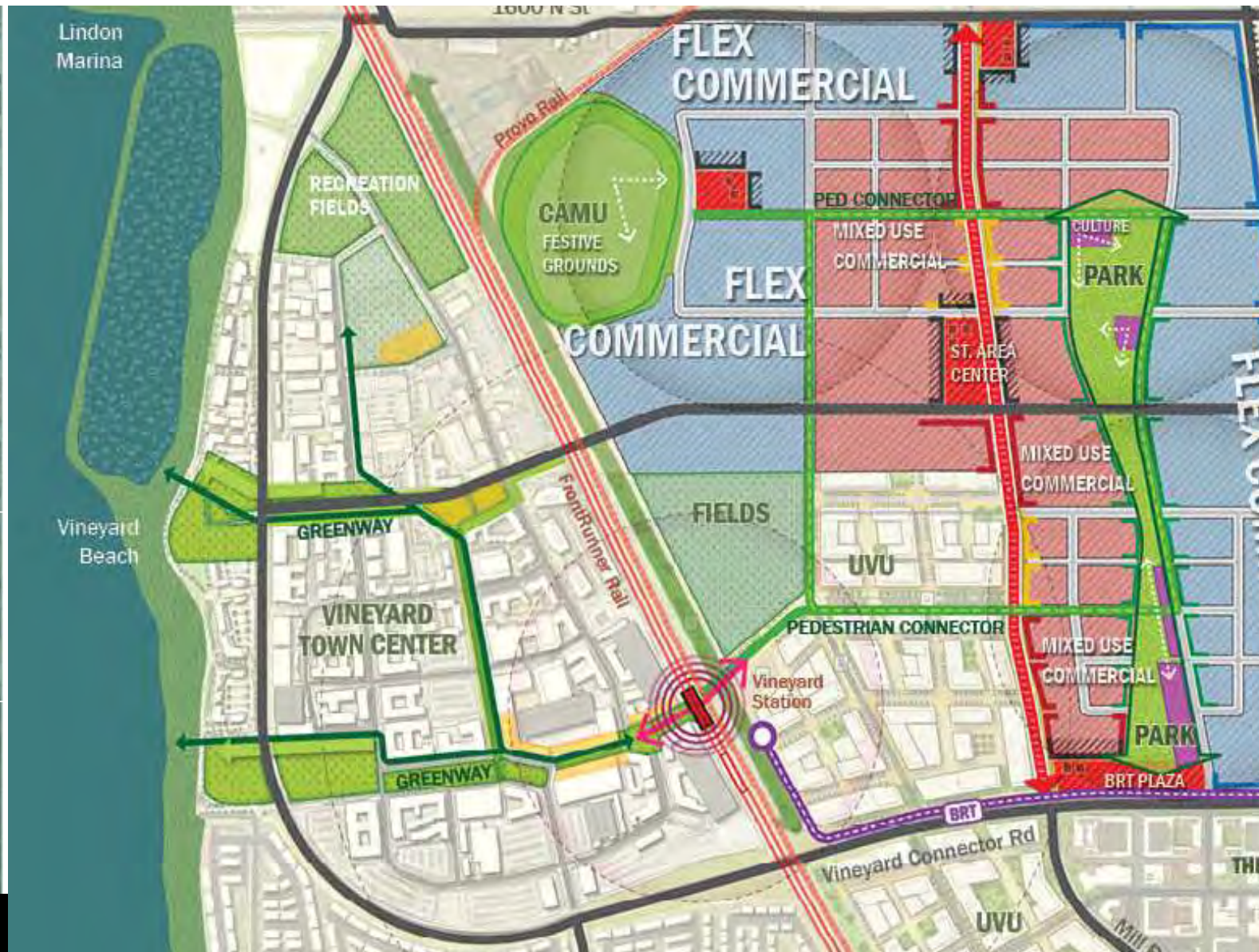
Waterfront at Utah City



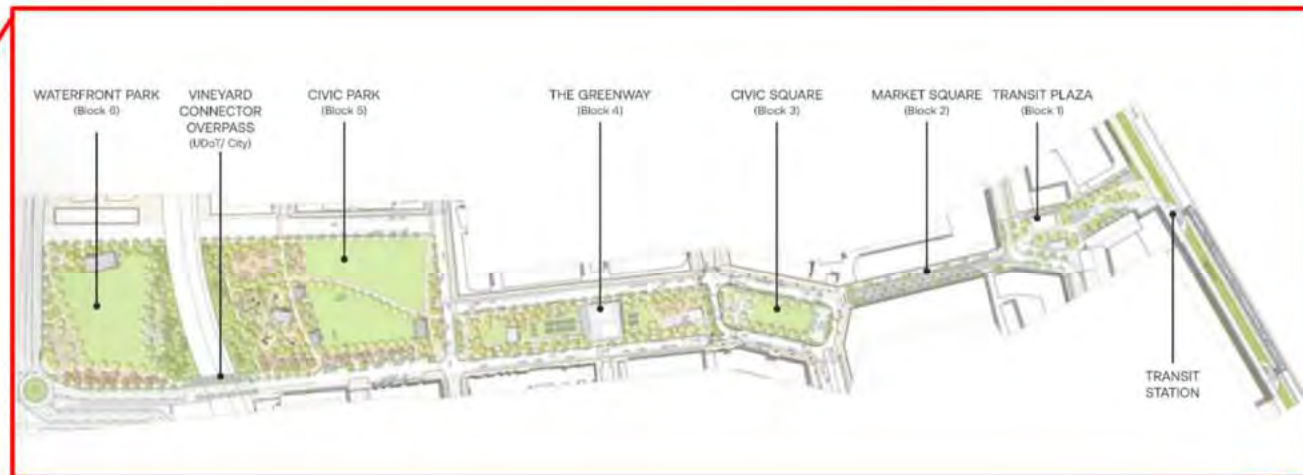
12 Acre Promenade



A Civic Plaza primed for events











































OJB





OJB





OJB





Ornamental Tree

Outlook Points

Native Grasses

Ornamental Planting

Enhanced Streetscape

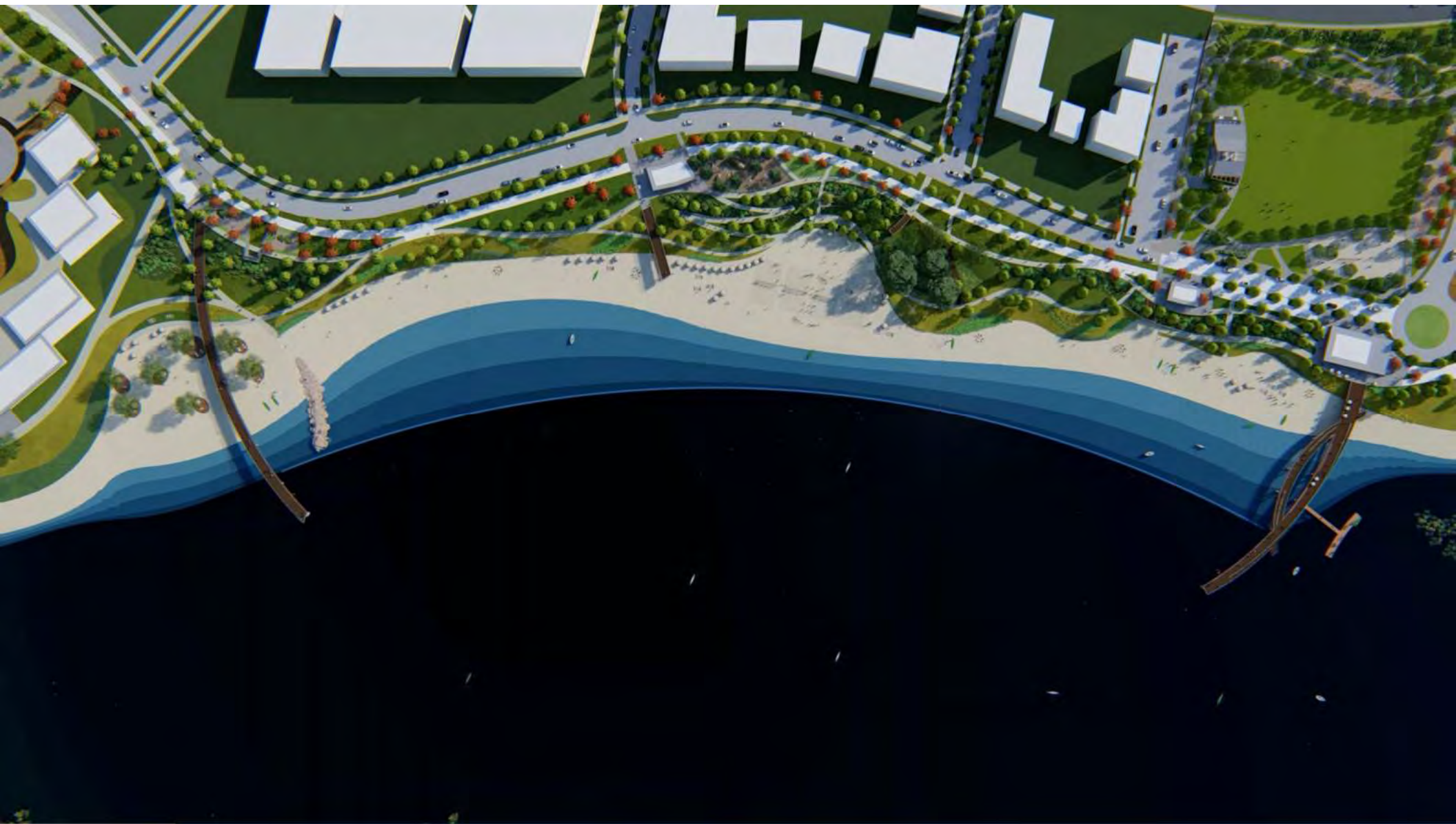
OJB



# Promenade & Vineyard Beach Park









CHILDREN'S PLAY AREA





ARCHITECTS, PLANNERS, DESIGNERS

# Project Planners

**DPZ**  
CODESIGN

DPZ is a world-renowned **architect** and **land planner**.

## MOST NOTABLE PROJECTS

- Alys Beach
- Miami Waterfront
- Rosemary Beach
- Downtown Providence

**JEFF SPECK**

Jeff is internationally known as the foremost **walkability expert** in the world.

## MOST NOTABLE PROJECTS

- Kenmore Square
- Water Street Tampa

**NELSEN  
PARTNERS**  
ARCHITECTS & PLANNERS

Nelsen is an award-winning **architect & planning firm** with projects globally.

## MOST NOTABLE PROJECTS

- Scottsdale Quarter
- Kierland Commons
- The Modern Tower
- Shops at Clearfork

**OJB**  
LANDSCAPE  
ARCHITECTURE

OJB is the premier **landscape architect** in the country.

## MOST NOTABLE PROJECTS

- Klyde Warren Park
- Bulfinch Crossing
- La Jolla Commons
- East River Texas



ARCHITECTS, PLANNERS, DESIGNERS

# Project Planners



EDSA is a **planning** and **architecture firm** who curated our beachfront designs.

## MOST NOTABLE PROJECTS

- Four Seasons Nevis
- Ritz Carlton Reserve Bermuda
- St. Regis Bahia Beach
- Atlantis



Sasaki is a global **planner & architect** and is planning our East side Expansion.

## MOST NOTABLE PROJECTS

- Chicago Riverwalk
- Boston Seaport
- Costa Smeralda
- 2008 Beijing Olympics



Dig Studio is a **land planner & landscape architect** who designed our Paseo Network.

## MOST NOTABLE PROJECTS

- Scottsdale Civic Center
- Market Station
- Denver Union Station



KPF is a global **architect** firm designing our midtown block.

## MOST NOTABLE PROJECTS

- 55 Hudson Yards
- Infinity Tower , Brazil
- Lotte World Tower, Seoul





## All coming together to make this *dream city*...

We're one of the largest regional developments in the state poised as a transportation nexus and ... economic center next to the largest university, growing at 10,000%, becoming the lifeblood to this area for students, young families, talented professionals, retirees, all coming together to make this dream city..." — Julie Fullmer, Vineyard Mayor







# VINEYARD

STAY CONNECTED

## Thank You

FOLLOW ALONG AT [UTAHCITY.COM](http://UTAHCITY.COM) |

@[UTAHCITYUTAH](https://twitter.com/UTAHCITYUTAH)



# UTAHCITY